

The wireless feeding and signal transmission for 8 signals of detection switches are possible with TSLOT shape!

- **Implementation of the space saving**
Fits completely in TSLOT!
- **Prevention of the false push**
The automatic identification of the die with the sensor!
- **Work efficiency!**
Improving productivity! To lighten the burden of workers.



transmitter

RPT8-TSLOTD-PU/CP (DC2 wire)
 RPT8-TSLOTD-PU/CP (DC3 wire)



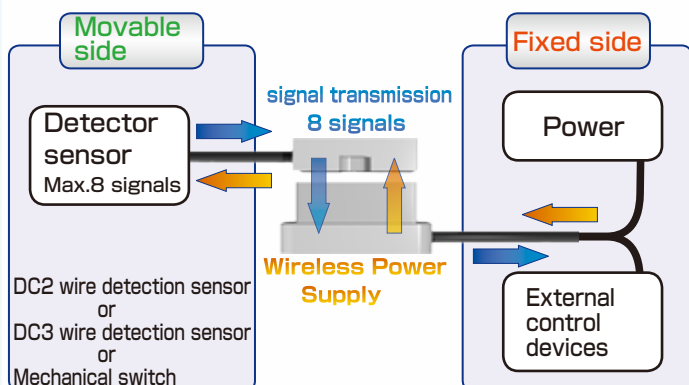
output sensor

RPE8-TSLOTN-PU
 RPE8-TSLOTP-PU

By attaching to the TSLOT of the press machine and prevent false push, and work efficiency improves! !

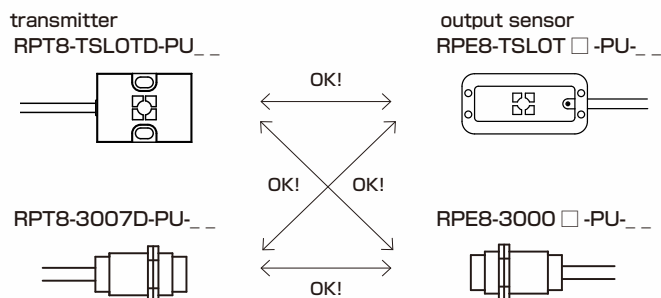
Work with a commercial items, as DC2 wire and DC3 wire detection sensors

As for this product, wireless feeds DC2 wire and DC3 wire detection sensor to movable side. And transmit the detection signal and output to outside control equipment by an output type of NPN or PNP.



Combination is good with the remote system of the M30 shape!

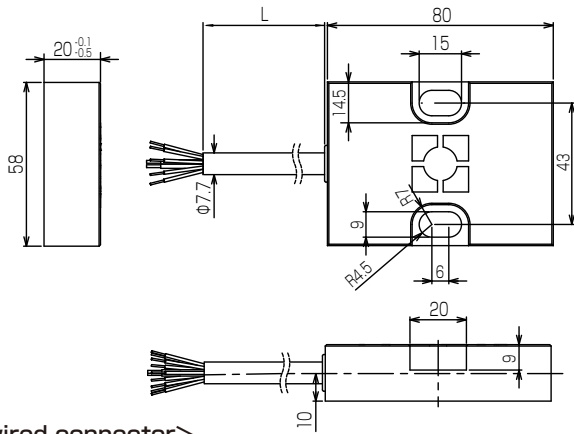
RPT8-TSLOTD-PU is compatible with the remote system of the following. It can be used in combination as shown below.



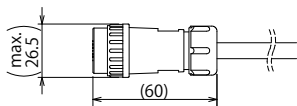
- Limited to the remote sensor system of direct current 2 line type specifications.
- Depending on the combination, rated transmission distance can change. Please refer to the User's Guide.

DC 2-/3-wire detector type

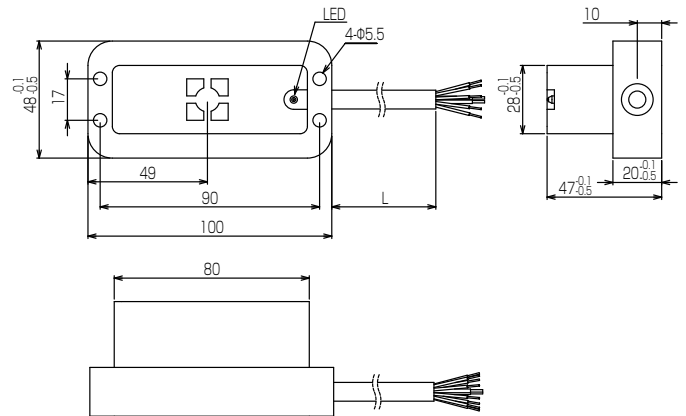
Transmitter



<Pre-wired connector>



output sensor



		Transmitter	
		DC 2-wire	DC 3-wire
Type code	Cable specification	RPT8-TSLOTD-PU_ _	RPT8-TSLOT-PU_ _
	(Pre-wired connector)	RPT8-TSLOTD-PU-CP_ _	Only cable specification
Drive voltage		20...26 VDC	12V DC/1.5V
Drive current		5 mA per sensor	≤ 150mA
No. of Input signals		8 signals	8 signals
Operating distance		1...5mm	2...5mm
Operating temperature		0...+50°C	0...+50°C
protective construction		IP67	IP67
Cable		PUR / φ 7.7 , 2x21AWG+9x25AWG	

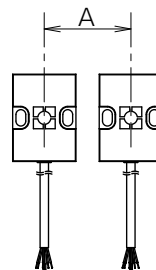
		output sensor	
		NPN output	PNP output
Type code		RPE8-TSLOTN-PU_ _	RPE8-TSLOTP-PU_ _
Power supply		24V DC ± +10% (incl. ripple)	
Current consumption		≤ 400mA	
No. of output signal		8 signals + 1 signal (Inzone)	
Load current		max.50mA (1 signal.)	
Frequency of operation		60Hz	
LED (indication)		Inzone	
Operating temperature		0...+50°C	
protective construction		IP67	
Cable		PUR / φ 7.7 , 2x21AWG+9x25AWG	

Applicable sensor

	DC 2-wire sensor		DC 3-wire sensor
Supply voltage	12V DC	Supply voltage	12V DC
Load current	less than 1 mA	Total current consumption	less than 150mA
Residual voltage	less than 3.5V	Residual voltage	less than 3.5V
Load current	less than 5mA		-

Please be sure to use applicable sensor according to the specification.

installation condition



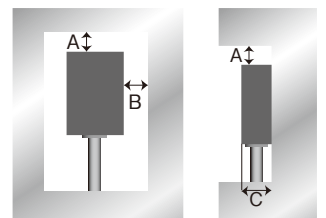
【Mutual interference】

In order to avoid influence of surrounding metal, or to avoid mutual influence between parallel-mounted sensors, keep the minimum free zone as described below.

Type code	A (mm)
RPT8-TSLOTD-PU_ _	200
RPT8-TSLOT-PU_ _	

• Influence of surrounding metal

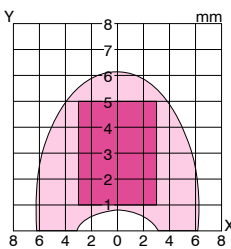
When planting the product to the metal, to avoid influence of surrounding metal, keep minimum spacing shown below.



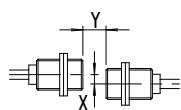
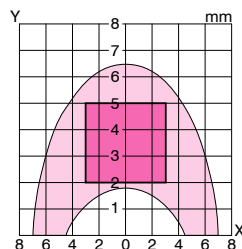
※ For the output section, I will omit for T-slot mounted the premise.

Transmission Diagram (ex: Power Supply voltage 24V)

■ DC 2-wire



■ DC 3-wire



X:center off-set(mm)
Y:transmitting distance(mm)

Drive current ≤ 150mA

Wireless Power Supply by
B & PLUS K.K.

Mail : b-plus-usa@b-plus-kk.com
Web : http://www.b-plus-kk.com

* Infor may change the mention contents such as specifications without a notice.
Thank you for understanding