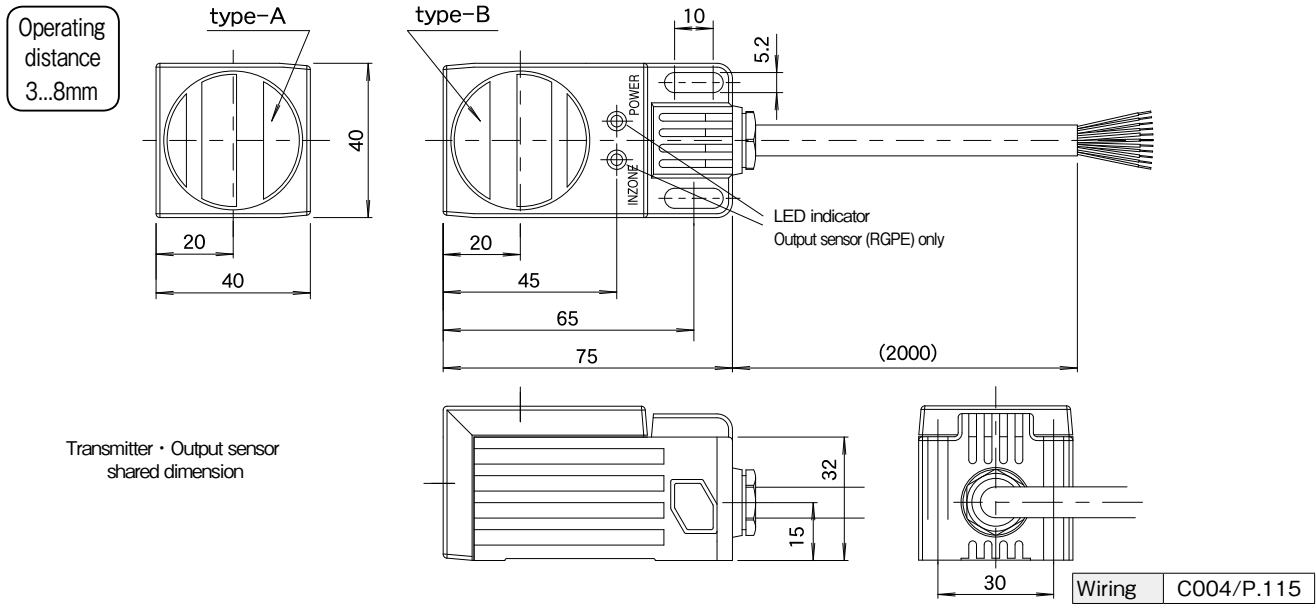


RGPT-30  
RGPE-30

RGPT-40  
RGPE-40



for max. 8 sensors / Size : 40X40



Signal type

Switch

Sensor type

DC 3-wire

Remote Sensor

DC 3-wire detector type

DC 3-wire type Terminal unit

DC 2-wire detector type

DC 2-wire type Terminal unit

Exclusive detector type

Thermocouple type

Resistance thermometer type

Load cell type

Analog sensor type

| Transmitter           |  |
|-----------------------|--|
| Type Code             | NPN PNP RGPT-4008-V1220A/B*-PU-01                        |
| Drive voltage         | 12V ± 1.5V DC  |
| Drive current         | max.200mA  |
| No. of input signal   | 8  |
| Operating distance    | 3..8mm   |
| Center offset         | ± 3mm  |
| Drive current         | ≤ 200mA  |
| Operating temperature | 0...+50°C  |
| Protection class      | IP67   |
| Cable                 | PUR / Ø7.7, 2x0.5mm <sup>2</sup> + 9x0.18mm <sup>2</sup> |
| Material Housing      | Aluminum (metal part)                                    |
| Active face           | ABS+PBT (resin part)                                     |
| Weight                | Body 220g + Cable 75 g × 1 m                             |
| Remarks               | *Selectable active face A (front) or B (top).            |

| Output sensor          |  |
|------------------------|--|
| Type Code              | NPN PNP RGPE-4008-V1220NA/B*-PU-02                       |
| Operational voltage    | 24V DC ± 10% (incl. ripple)                              |
| Current consumption    | ≤ 500mA  |
| No. of output signal   | 8 +1 (InZone)  |
| Load current           | max.50mA per output                                      |
| Frequency of operation | 60Hz   |
| LED                    | InZone (Yellow) / Power (Green)                          |
| Operating temperature  | 0...+50°C  |
| Protection class       | IP67   |
| Cable                  | PUR / Ø7.7, 2x0.5mm <sup>2</sup> + 9x0.18mm <sup>2</sup> |
| Material Housing       | Aluminum (metal part)                                    |
| Active face            | ABS+PBT (resin part)                                     |
| Weight                 | Body 220g + Cable 75g × 2 m                              |
| Remarks                | *Selectable active face A (front) or B (top).            |

Applicable sensor

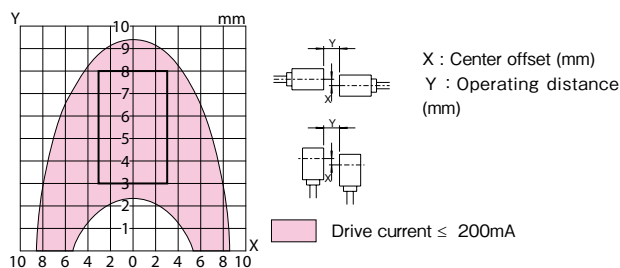
|                            |         |
|----------------------------|---------|
| Supply voltage             | 12V DC  |
| Total current consumption* | ≤ 200mA |
| Residual voltage           | ≤ 3.5V  |
| Load current               | ---     |

Please use a sensor which works definitely in the condition described on left.

\*Total current consumption of all connected sensor.

Typical Transmitting Diagram (Supply voltage at 24V/non-flush mount)

RGPT-4008-V1220A/B-PU-\_\_ / RGPE-4008-V1220 □ A/B-PU-\_\_



Combination between RGPT-4008 and RGPE-4008

Refer to the followings for the combination of active face A and B

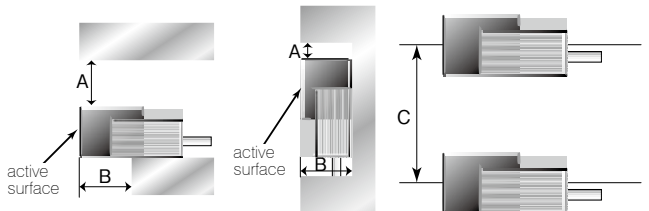


Installation notes

In order to avoid influence of surrounding metal, or to avoid mutual influence between parallel-mounted Transmitters or Output sensors, keep the minimum distances as described below.

Surrounding metal

Parallel installation



| Type Code                   | A(mm) | B(mm) | C(mm) |
|-----------------------------|-------|-------|-------|
| RGPT-4008-V1220A/B-PU-__    | 40    | 40    | 300   |
| RGPE-4008-V1220 □ A/B-PU-__ |       |       |       |

Exclusive sensor

Terminal box other unit

Wiring

Products for maintenance

Special spec.

Alphanumeric product list