

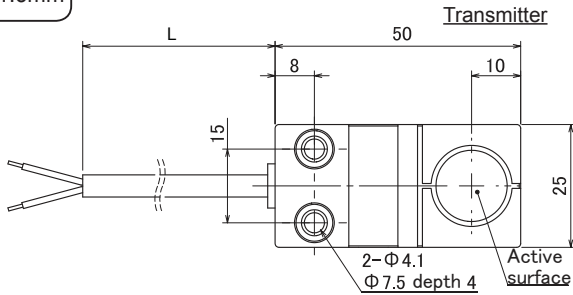
RPT-30
RPE-30

RPT-F0
RPE-F0

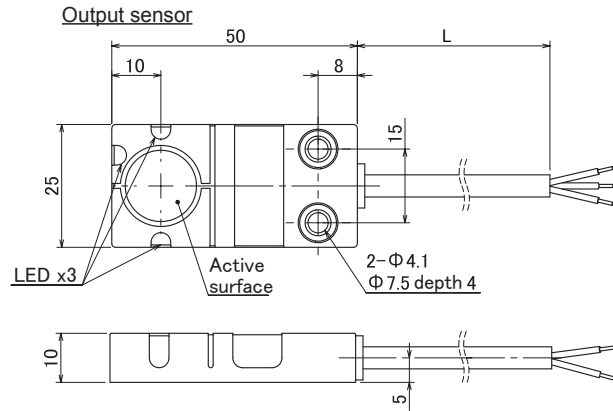
1
signal

for 1 sensor / Size : 50 x 25 x 10

Operating distance
0...1.5mm



A071



Wiring C006 / P.121

Transmitter	
Type Code	DC 2-wire RPT-F0D-PU-01
Drive voltage	12V ± 1.5V DC
Drive current	5mA
No. of Input signal	1 signal
Operating distance	0...1.5mm
Center offset	±1mm
Drive current	5mA
Operating temperature	0...+50°C
Protection class	IP67
Cable	PUR / φ 4.5 , 2x0.34mm ²
Material Housing	ABS
Rear face	Aluminum
Weight	Body 20 g + Cable 30 g x 1m
Remark	

Output sensor	
Type Code	NPN RPE-F0N-PU-02 PNP RPE-F0P-PU-02
Supply voltage	24V DC ±10% (including ripple)
Current consumption	≤ 70mA
No. of Output signal	1 signal
Load current	≤ 50mA
Frequency of operation	25Hz
LED	Signal output indication
Operating temperature	0...+50°C
Protection class	IP67
Cable	PUR / φ 4.5 , 3x0.34mm ²
Material Housing	ABS
Rear face	Aluminum
Weight	Body 20 g + Cable 30 g x 2m
Remark	

Signal type
Switch signal

Sensor type
DC 2-wire

Remote Sensor

DC 3-wire
Detector type

DC 3-wire
Terminal unit

DC 2-wire
Detector type

DC 2-wire
Terminal unit

Exclusive
detector type

Thermocouple
type

Resistance
thermometer type

Load cell type

Analog sensor
type

Applicable sensor

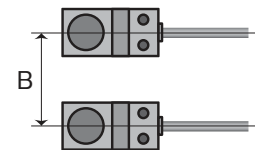
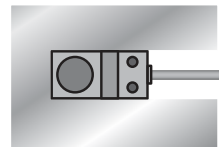
Supply voltage	12V DC	Please sure to use applicable detector switch according to the specification on left.
Residual voltage	≤ 3.5V	
Minimum load current	≤ 5mA	
Leakage current	≤ 1mA	

Installation notes

In order to avoid influence of surrounding metal, or to avoid mutual influence between parallel-mounted sensors, keep the minimum free zone as described below.

■ Surrounding metal

■ Parallel installation

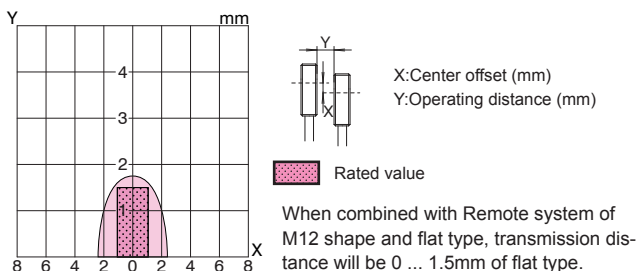


3 sides with the exception of the mouth side metal Up to flush with the surface removed transmission cable. However, you must open the port side eject cable.

Type Code	A(mm)	B(mm)
RPT-F0D-PU-__	10	100
RPE-F0 □ -PU-__		

Typical Transmitting Diagram (Supply voltage at 24V / non-flush mount)

RPT-F0D-PU-__ / RPE-F0 □ -PU-__



Exclusive sensor

Terminal box
Other unit

Wiring

Discontinued
plans

Index